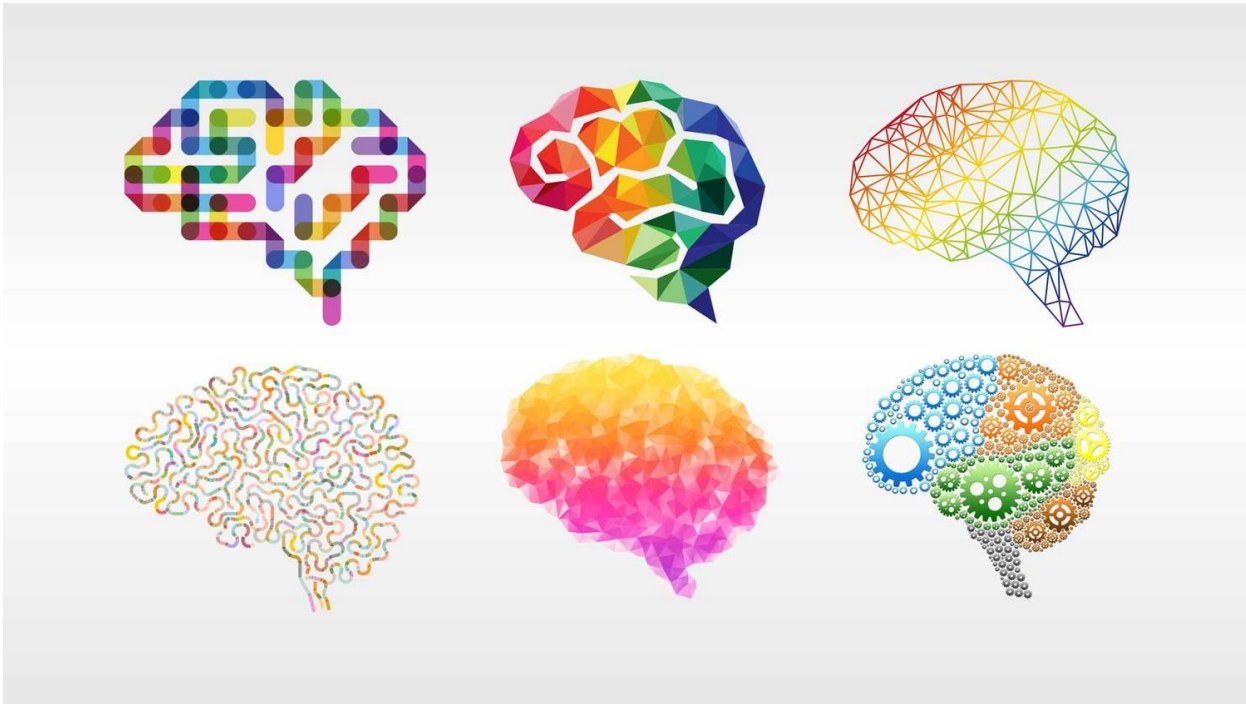


A Level Psychology



Welcome to Psychology!

What is Psychology?

Psychology is the study of the mind and behaviour. It is concerned with how people think, feel, develop and act, and tries to explain why people behave the way they do.

The following sites will provide further insight to wider aspects beyond the specification.

The British Psychological Society (BPS) <http://www.bps.org.uk/>

Research Digest <https://digest.bps.org.uk/> - You can subscribe to receive this fortnightly by e-mail (free of charge) and each brief article is linked to the relevant A level specifications.

BBC www.bbc.co.uk/radio4/science/allinthemind.shtml - All in the Mind BBC R4 regular psychology programme

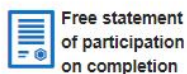
Before you start A level psychology in September, please complete the free online course provided by the Open University. See page 2 for details.

You will receive a downloadable statement of participation. Either print it and bring to your first lesson or email (a photo of is also fine) to: marchantt@bishopluffa.org.uk

I look forward to seeing you in September.

Free course

Starting with psychology



Free statement of participation on completion



About this free course

5 hours study

Level 1: Introductory

Ratings ★★★★★

4 out of 5 stars

Course description

Course content

Course reviews

Create an account to get more

Create an account and sign in. Enrol and complete the course for a free statement of participation or digital badge if available.

Create account / Sign in

The most 'important and greatest puzzle' we face as humans is ourselves (Boring, 1950, p. 56). Humans are a puzzle, one that is complex, subtle and multi-layered, and it gets even more complicated as we evolve over time and change within different contexts. When answering the question 'what makes us who we are?' psychologists put forward a range of explanations about why people feel, think and behave the way they do. Just when psychologists seem to understand one bit of 'who we are' up pops some new evidence to show a different side! It is not easy to pin down all the many influences. This free course, Starting with psychology, makes a start.

Create an account to get more



Track your progress

Review and track your learning through your OpenLearn Profile.



Statement of Participation

On completion of a course you will earn a Statement of Participation.



Access all course activities

Take course quizzes and access all learning.



Review the course

When you have finished a course leave a review and tell others what you think.

Create account / Sign in