

Welcome to

Bishop Luffa

Church of England

School

Year 9

Parents' and Carers' Information Evening

Tuesday 10th September 2024

The image shows the interior of a modern building. On the left, there is a staircase with a dark metal railing and a wooden handrail. The background is dominated by a large, multi-paned glass window that looks out onto a lush green landscape with trees. The ceiling is dark, and a single light fixture is visible. The overall atmosphere is bright and airy due to the natural light from the window.

Bishop Luffa School
Parents & Friends Association

How can you help?



- Help at events
- Regular donation
- Attend events
- Buy raffle tickets

Forthcoming Events

- Burns Night: Saturday 18th January 2025





Big Walk 2024

**Friday 11th
October**



How do I contact the PFA?



- pfa@bishopluffa.org.uk

Organisational changes from Year 8 into Year 9



Set half year group classes	Mixed ability half year group classes
Languages	PE and PSHE
Communication studies	Arts Faculty subjects - Art, Computer Science, Music, Drama
Maths	Humanities Faculty subjects - History, Geography, RE
Science	All Technology subjects - students study 1st choice tech and one other all year.
English	

Curriculum progression



- KS3 and KS4 prepare students for GCSE.
- Science (Feb Half term) and Maths (Sept) formally start GCSE courses in Year 9

The Arbor App allows you to:



- Monitor attendance, rewards and behaviour including any detentions
- View your child's timetable
- Access reports
- Load cash to Cashless catering
- Make purchases from the 'shop'
- Request that details we hold about you are changed

Full details available here:

<https://www.bishopluffa.org.uk/parents-and-carers/monitoring-systems-and-it-resources/arbor-parent-portal-and-app/>

Attendance



- Importance of good attendance
- New, stricter guidance from the DfE
- There is a proven link between attendance and better outcomes
- You can view your child's statutory AM and PM attendance on Arbor
- Parent / Carer update regarding your child's attendance will be sent every half-term

Attendance



Year 11 GCSE results, by attendance

Attendance	Average GCSE Grade 2024	Average GCSE Grade 2023
Above 95%	5.7	5.6
90.1% - 95%	5.1	5.3
80.1% - 90%	4.6	4.6
50.1% - 80%	2.9	3.0
Below 50%	2.9	2.7

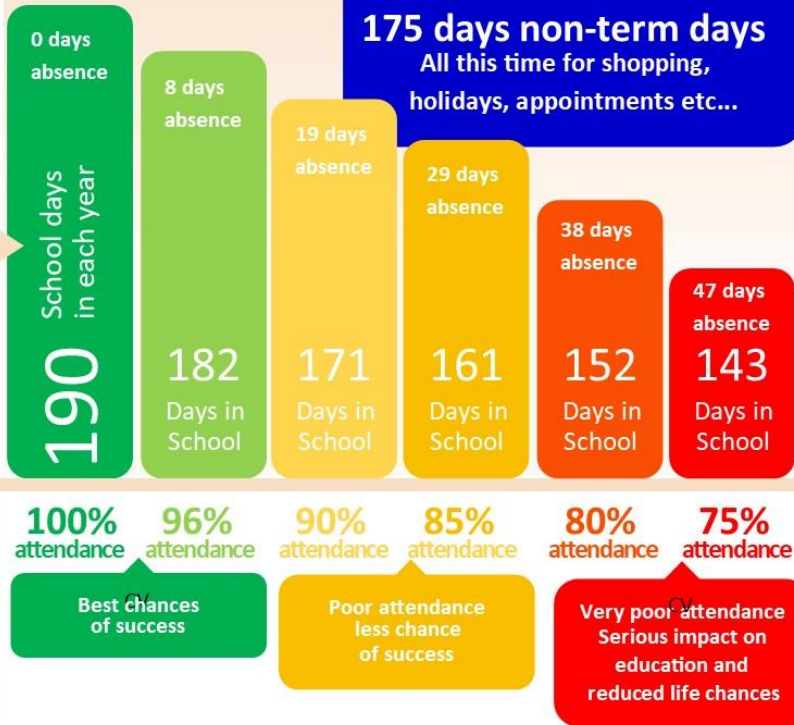
Attendance



ATTENDANCE

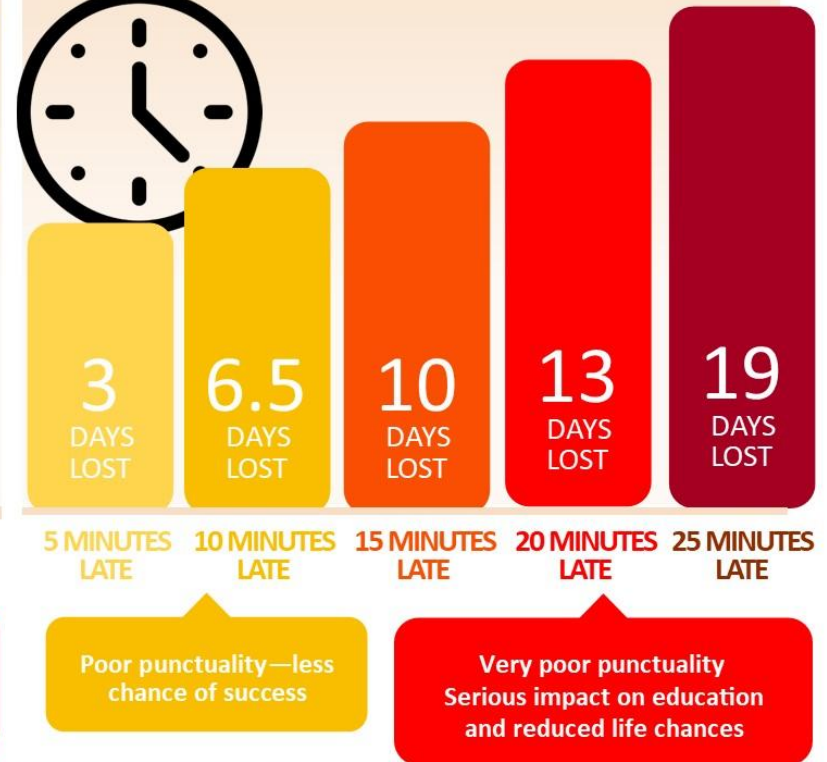
Good attendance means being in school at least 96% of the time (182 to 190 days)

365 days in a calendar year



PUNCTUALITY

...being in school, on time, every day, ready to learn.



DID YOU KNOW? A two week holiday in term time means that the highest attendance you can achieve is **94.7%**

DID YOU KNOW? If you are 15 minutes late each day you will have missed a full 2 weeks of school in one year?

Attendance



If your child is going to be absent, please contact the school by:

- emailing the dedicated absence address absence@bishopluffa.org.uk
- or calling the dedicated absence line on 01243 832681
- or the main school switchboard 01243 787741 and selecting Option 1

Our phone lines can be busy in the morning, so we would appreciate it if parents and carers could **use the email address whenever possible.**

Wellbeing @ Bishop Luffa



Your child will be supported by their Form Tutor and Head of House as their first point of contact. If your child needs to talk to somebody in school, we have 3 pastoral support staff (Mrs Conway, Mrs Roberts and Mrs Smith).

West Sussex has launched a new site:

<https://www.westsussex.gov.uk/education-children-and-families/childrens-mental-health-and-emotional-wellbeing/>

You and your child will soon receive an email, inviting you to sign up to [TeenTips](#) which has a variety of resources for teenagers and parents to access.

Options Key Dates



Monday 6th January 2025

- Year 9 Options begin with distribution of the Options booklet

Thursday 16th January 2025

- Year 9 Options Information Evening (6.30pm-7.30pm)

Monday 20th January 2025

- Preliminary options choices form returned

Thursday 30th January 2025

- Year 9 Parents' and Carers' Consultation Evening (4.15pm-7pm)

Monday 1st February 2025

- Final options choices form returned

Options - what could be happening now?



- Students need to start to think about the subjects they would like to continue in Year 10
- Discussing their thoughts with you as parents and carers
- Conversations with teachers about different subjects

Angie Hopp, Careers Co-ordinator

hoppa@bishopluffa.org.uk



- Work Experience – Years 10
- GCSE options support
- Careers Fair
- Year 9 & Year 10 Enterprise Days
 - Employer talks
- Drop in sessions - break/lunchtimes



Assessment and reporting



Wednesday 16th October 2024 (Effort and Target Grades)

- Effort Grades
- Targets for the end of KS3

Wednesday 15th January 2024 (Progress Grades)

- Effort Grades
- Target attainment (For the end of KS3)
- Current attainment (step and L,D,M)
- Projected attainment (For the end of KS3)

Friday 18th July 2025 (Written Report)

- Effort Grades
- Target attainment (For the end of KS3)
- Current attainment (step and L,D,M)
- Projected attainment (For the end of KS3)
- Written comment from class teacher

Assessment



Assessment mapped by faculties to inform reporting and progress.

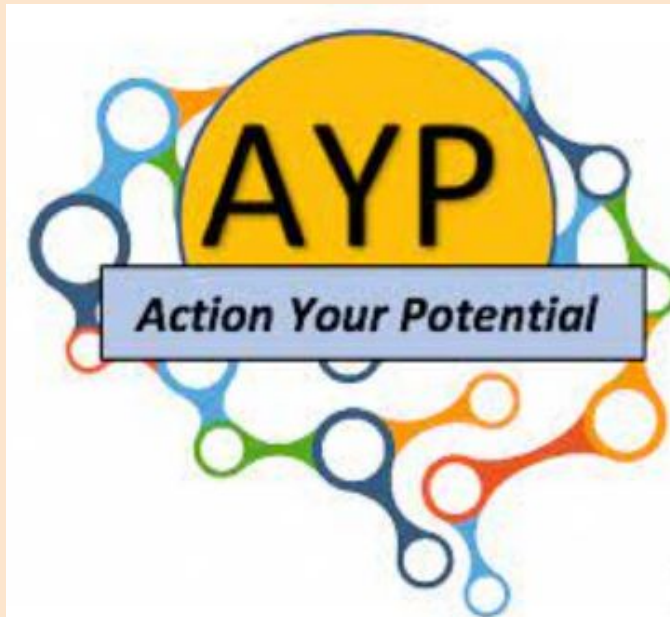
'Formal' exams in the sports hall build familiarity with the demands of this environment.

Revision and preparation for these exams allows students to develop the skills needed to be successful.


Well being & Self regulation

<https://www.actionyourpotential.org/>

<https://www.youtube.com/watch?v=R1PXR66VasY>



STUDY CAPTURE



Study Capture:
A process of **retrieving** key information a few hours after new information has been delivered.

Day	Date	Subject	Topic	Key words of the lesson (use subject specific words)	Key take away (Today I learnt ... use the keywords to remind yourself what you've learnt)	Rating my understanding (1-4, 1 = excellent understanding)
Example	01.01.23	Science	Forces	resultant force, accelerating force, vector	Balanced forces mean either the object is stationary or it is moving at a constant speed, unbalanced forces mean the object is either accelerating or decelerating	3
Monday						
Tuesday						
Wednesday						
Day						

Flashcards

are small note cards used for testing and improving memory through practiced information retrieval. Flashcards are typically two-sided, with the prompt / question on one side and the information / answer on the other.



Thank you for attending

Bishop Luffa

Church of England

School

Year 9

Parents' and Carers' Information Evening